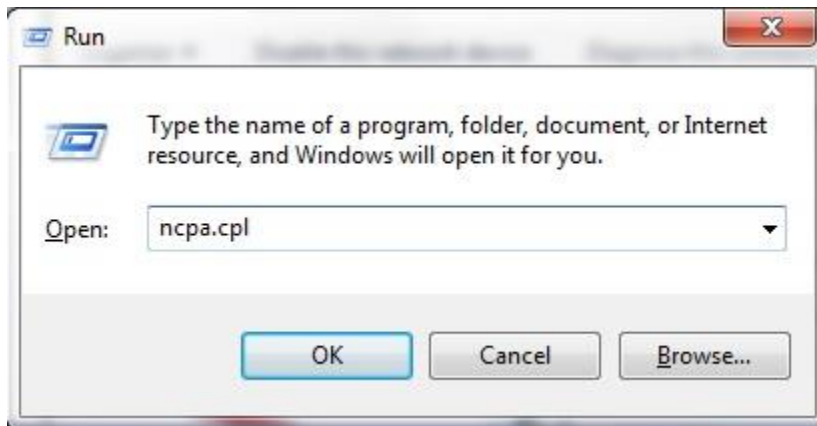
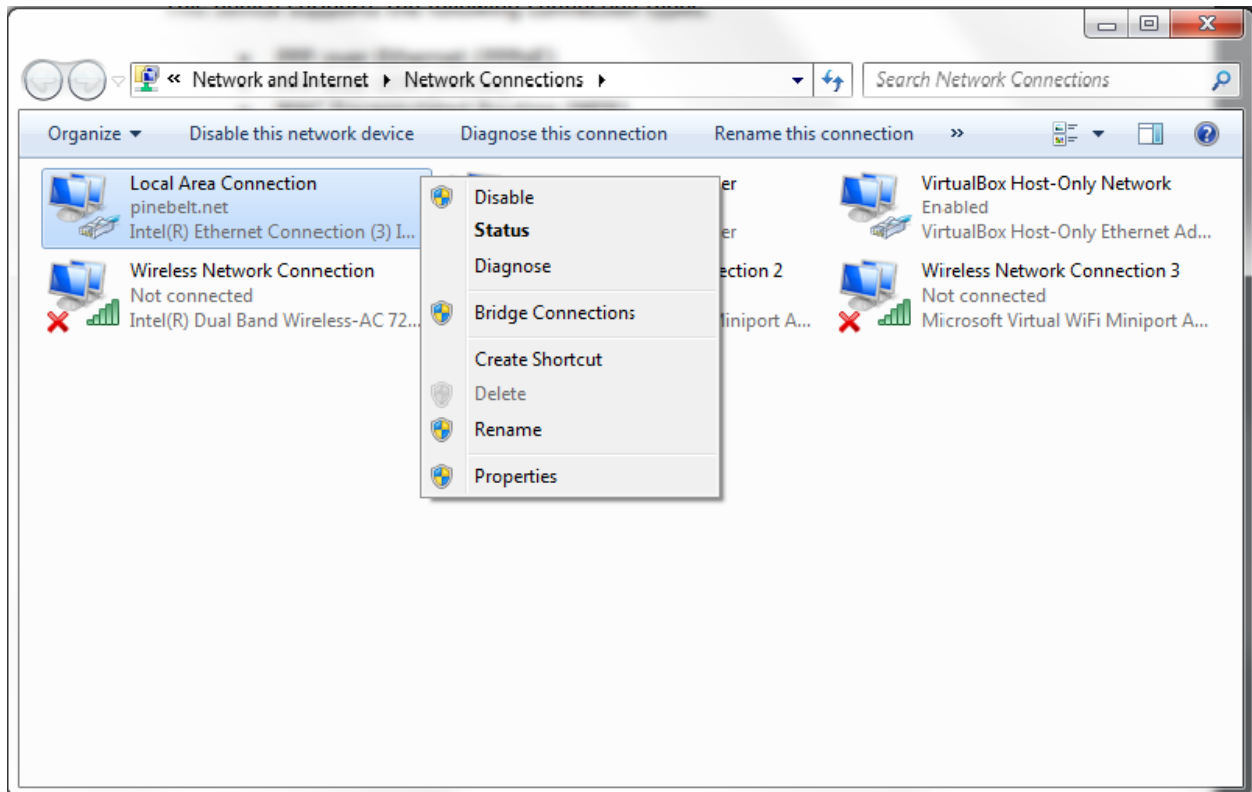


## Opening Network and Internet Settings in Windows 7,8,10

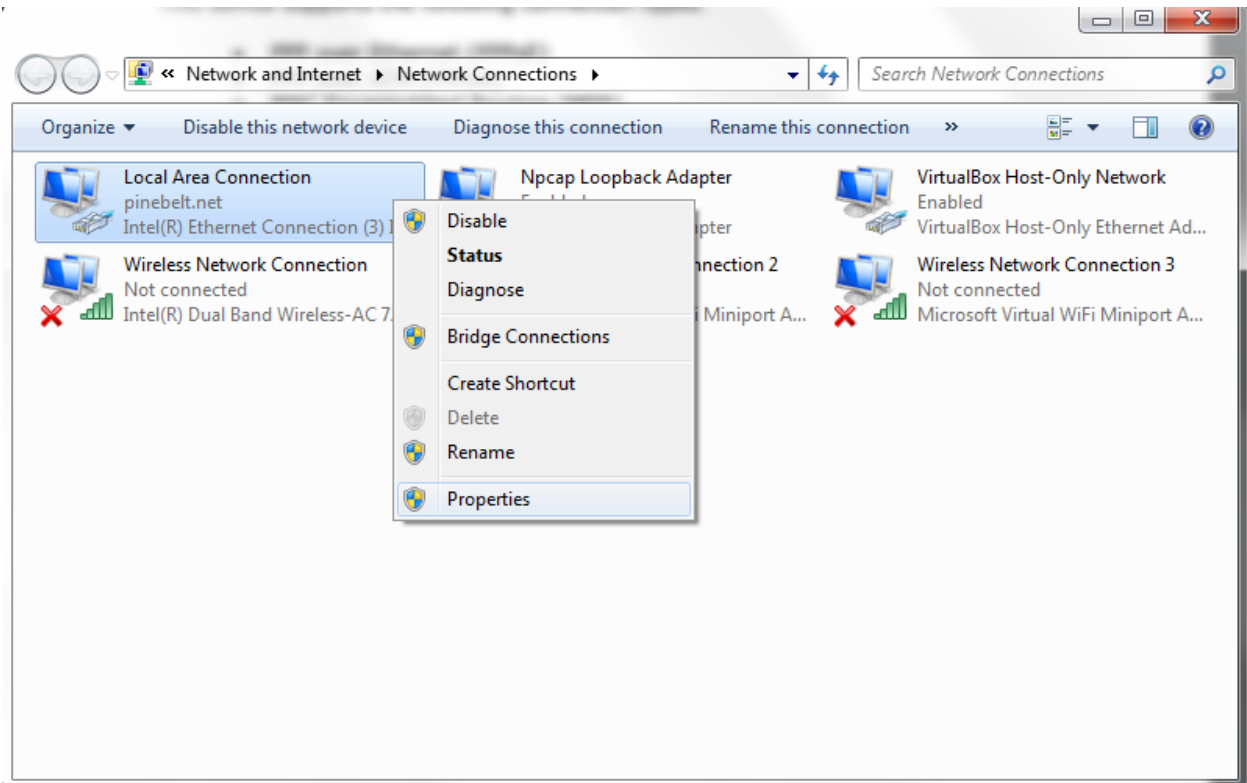
1. Hit **Windows+R** and in the text box type “**ncpa.cpl**” and hit **Enter**



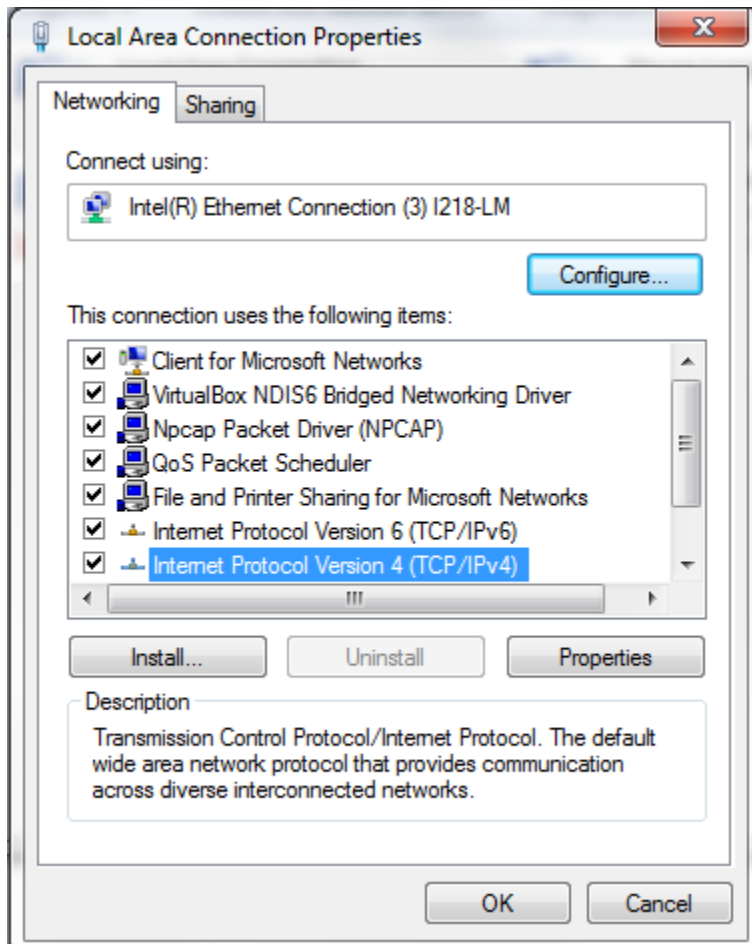
2. Right click your correct network connection, whether it is a local area connection or a wireless network connection.



### 3. Select **Properties**



4. Double-Click on **Internet Protocol Version 4 (TCP/IPv4)**



5. Now on our Router Troubleshooting page, click on the green login button under your specific router and scroll to section 3.2 of the Comtrend Documentation in order to change your configuration to either DHCP mode or static IP mode.